



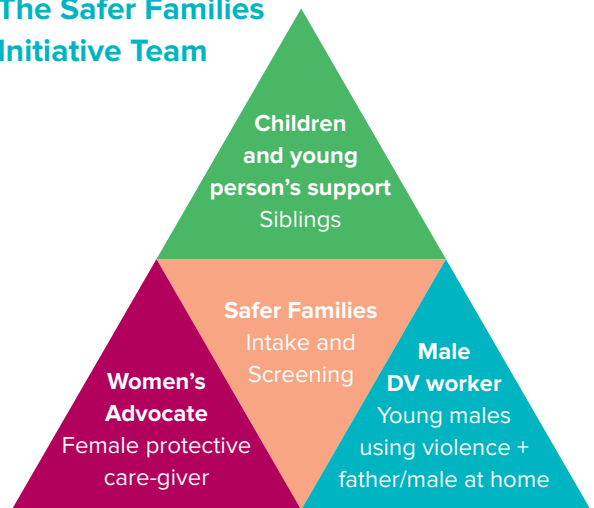
## Safer Families Initiative (SFI)

The Safer Families Initiative is a service for families where a young male is using power and control or violence against the female protective care-giver in the home.

**The Safer Families Initiative provides short-term support around:**

- **Risk and safety** responses
- **Advocacy** for the female protective care-giver
- **Psycho-education** using **Break4Change** evidenced based model
- **Engagement strategies** for adult male/perpetrator in the home (when safe to do so)
- **Active engagement** with the Carinity Talera ReNew program which provides longer term therapeutic support for the family. (See over page.)

### The Safer Families Initiative Team



### Eligibility for Safer Families Initiative

There is a young male aged 12-17 in the home using violence towards a female protective care-giver

There is an experience of DV for the family

The family resides within the Brisbane Metropolitan Area.

continued overleaf...

# break

# the cycle

## Carinity Talera ReNew Program

Following short-term support offered by the Safer Families Initiative, Carinity Talera's ReNew program provides the opportunity for mothers and sons to engage in trauma informed, attachment focused therapy, from a position of safety and preparedness.

Carinity Talera provides focused individual and family therapy and opportunities for group work participation to support mothers, sons, and siblings aged 12-17yrs. Carinity Talera's therapeutic support focuses on:

- The **joint trauma** experienced by the family
- **Rebuilding** the mother-son attachment
- Assisting sons in developing more adaptive **problem-solving skills** that do not incorporate aggression, coercion and violence
- **Emotion regulation**, non-violent coping strategies, and increased capacity for healthy self-expression and communication
- **Challenging** harmful gendered attitudes and pro-violence beliefs
- **Assisting mothers** in reclaiming their confidence and authority as a parent
- **Ongoing liaison** with BDVS regarding risk and safety.

## How can you refer into Safer Families Initiative (SFI)?



If you would like to discuss a referral or a self referral please contact SFI on **07 3013 6024**.



Referring agencies can download the referral form from our website: [www.bdvs.org.au](http://www.bdvs.org.au) and e-mail to: [bdvssaferfamilies@micahprojects.org.au](mailto:bdvssaferfamilies@micahprojects.org.au)



After receiving a referral, SFI Intake will assess eligibility and contact participants to organise an intake appointment.



Referrers may also be invited into a case-coordination meeting to discuss the family's needs to ensure we are working alongside existing case management plans.



## The Safer Families Initiative

can be contacted Monday to Friday, 9am – 5pm on **07 3013 6024**.